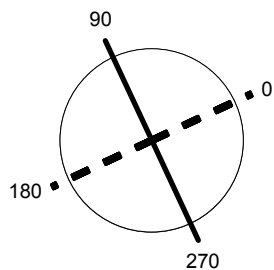


Luminaire		Measurem.		Lamp	
Code	UMC-20011-T5-W40 (US-1804)	Code	LIGMAN	Code	MC-20011-T5-W40
Name	Macaron Post top LED	Name	Macaron Post top LED	Number	1
Line	lesna 2002 Absolute	Date	21-02-2018	Position	
Luminaire Flux	11311.49 lm	Luminaire Power	143.00 W	Efficacy	79.10 lm/W
				Efficiency	100.00%
Lamps Flux	11311.49 lm	Maximum value	1003.56 cd/klm	Position	C=82.50 G=15.00
				CG	Asymmetrical
Round Luminaire		Diam.	520 mm	Height	1 mm
Round Luminous Area		Diam.	520 mm	Height	0 mm
Horizontal Luminous Area	0.212372 m2			Emitting area on Plane 180°	0.000000 m2
Emitting area on Plane 0°	0.000000 m2			Emitting area on Plane 270°	0.000000 m2
Emitting area on Plane 90°	0.000000 m2			Glare area at 76°	0.051377 m2
Coordinate system	CG	Symmetry Type	Asymmetrical		
Date	21-02-2018	Maximum Gamma Angle	180		
Measurement Distance	0.00	Measurement Flux	11311.49 lm		
Operator		Source voltage			
Temperature	25.00 °C	Source current			
Humidity	60.00 %	Photocell			
Notes					

Line	Code	Luminaire Lamps		Flux [lm]	Pow. [W]	Q.ty
	MC-20011-T5-W40	Name	MC-20011-T5-W40 143 W 11311.5 lm	11311.49	143.00	1
C.I.E.	89 98 100 100 100		D DIN 5040	A60		
F UTE	1.00 A		B NBN	BZ 1		

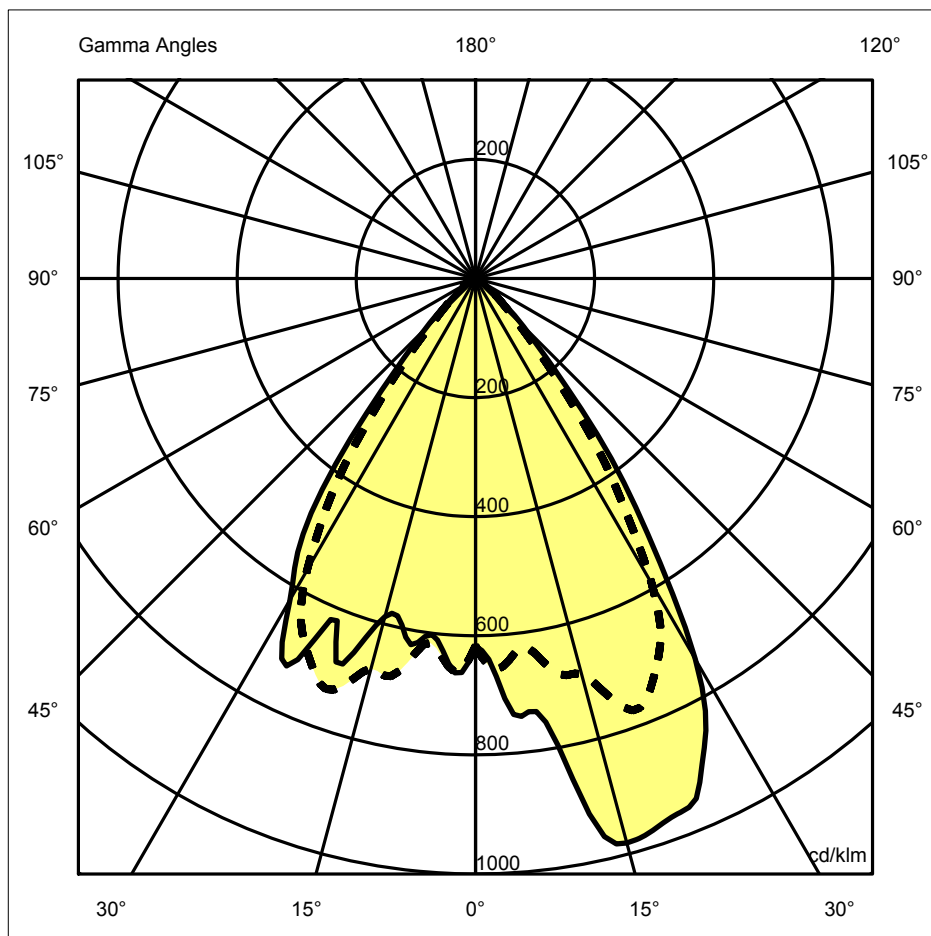
Diam=520mm



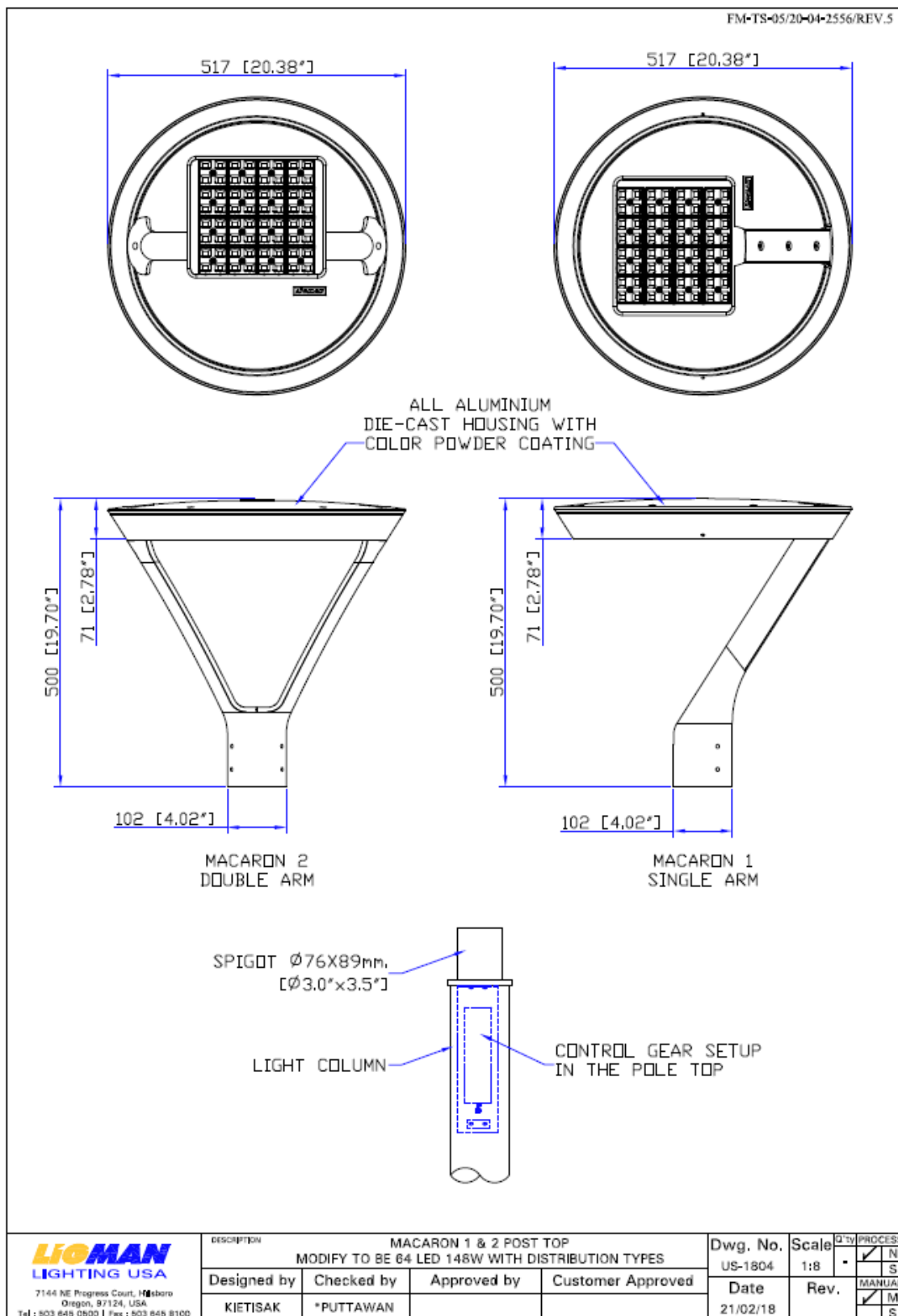
C Halfplanes

180.0 --- 0.0
270.0 --- 90.0

ULOR 0.00 %
DLOR 100.00 %
RN 0.00 %



Luminaire		Measur.		Lamp		
Code	UMC-20011-T5-W40 (US-1804)	Code	LIGMAN	Code	MC-20011-T5-W40	
Name	Macaron Post top LED	Name	Macaron Post top LED	Number	1	
Line	lesna 2002 Absolute	Date	21-02-2018	Position		
Luminaire Flux	11311.49 lm	Luminaire Power	143.00 W	Efficacy	79.10 lm/W	Efficiency 100.00%
Lamps Flux	11311.49 lm	Maximum value	1003.56 cd/klm	Position	C=82.50 G=15.00	CG Asymmetrical

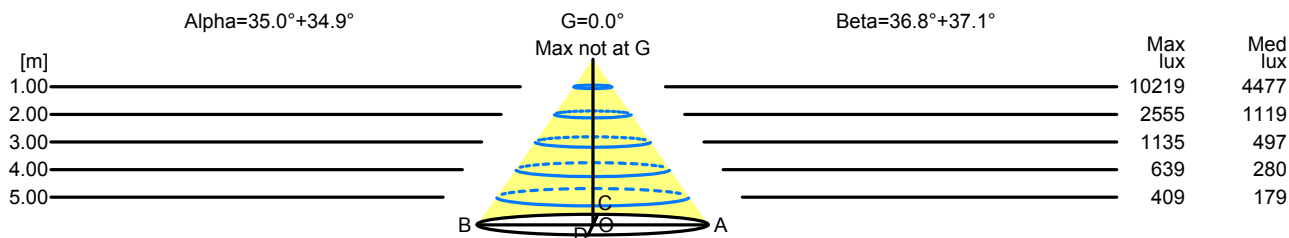


Luminaire			Measurem.			Lamp	
Code	UMC-20011-T5-W40 (US-1804)		Code	LIGMAN		Code	MC-20011-T5-W40
Name	Macaron Post top LED		Name	Macaron Post top LED		Number	1
Line	lesna 2002 Absolute		Date	21-02-2018		Position	
Luminaire Flux	11311.49 lm	Luminaire Power	143.00 W	Efficacy	79.10 lm/W	Efficiency	100.00%
Lamps Flux	11311.49 lm	Maximum value	1003.56 cd/klm	Position	C=82.50 G=15.00	CG	Asymmetrical

Width at 50.00 % of Max Intensity

H[m]	1.00	2.00	3.00	4.00	5.00	H[m]	1.00	2.00	3.00	4.00	5.00
OA	0.70	1.39	2.09	2.79	3.48	OC	0.75	1.50	2.25	3.00	3.75
OB	0.70	1.40	2.10	2.80	3.49	OD	0.76	1.51	2.27	3.02	3.78

	Luminous Intensities [cd/klm]									
	0	5	15	25	35	45	55	65	75	85
OA	6980.70	7284.20	7775.00	8130.80	4308.00	981.70	314.10	111.80	43.90	0.00
OB	6980.70	7225.20	7668.00	7662.40	4345.10	1003.70	298.40	108.80	45.90	0.00
OC	6980.70	8312.20	11099.00	10183.60	5304.20	1260.80	310.10	152.60	42.50	0.00
OD	6980.70	7095.80	6649.20	7985.50	5440.50	1321.30	323.10	146.70	46.10	0.00

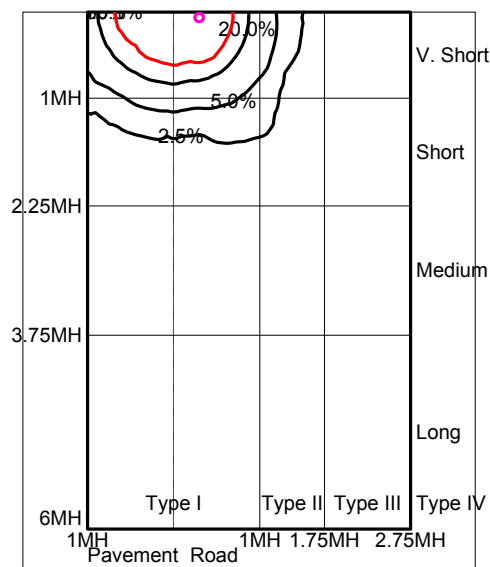
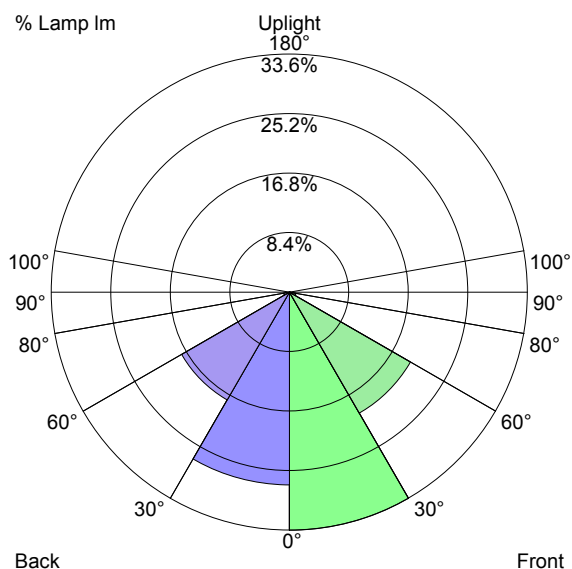


H[m]	D[m]	Max lux	Med lux	Alpha=35.0°+34.9°	G=0.0 Max not at G	
1.00	1.40	10219	4477			
2.00	2.79	2555	1119			
3.00	4.19	1135	497			
4.00	5.58	639	280			
5.00	6.98	409	179			

H[m]	D[m]	Max lux	Med lux	Beta=37.1°+36.8°	G=0.0 Max not at G	
1.00	1.51	10219	4477			
2.00	3.01	2555	1119			
3.00	4.52	1135	497			
4.00	6.02	639	280			
5.00	7.53	409	179			

Luminaire		Measurem.		Lamp		
Code	UMC-20011-T5-W40 (US-1804)	Code	LIGMAN	Code	MC-20011-T5-W40	
Name	Macaron Post top LED	Name	Macaron Post top LED	Number	1	
Line	lesna 2002 Absolute	Date	21-02-2018	Position		
Luminaire Flux	11311.49 lm	Luminaire Power	143.00 W	Efficacy	79.10 lm/W	Efficiency 100.00%
Lamps Flux	11311.49 lm	Maximum value	1003.56 cd/klm	Position	C=82.50 G=15.00	CG Asymmetrical

US ROAD STANDARDS



Luminaire Classification System (LCS)			
LCS Zone		Lumens	%Lamp
FL	0° -- 30°	3804.7 lm	33.6 %
FM	30° -- 60°	2232.8 lm	19.7 %
FH	60° -- 80°	106.0 lm	0.9 %
FVH	80° -- 90°	2.6 lm	0.0 %
BL	0° -- 30°	3079.9 lm	27.2 %
BM	30° -- 60°	1989.3 lm	17.6 %
BH	60° -- 80°	93.9 lm	0.8 %
BVH	80° -- 90°	2.2 lm	0.0 %
UL	90° -- 100°	0.0 lm	0.0 %
UH	100° -- 180°	0.0 lm	0.0 %
TOTALS		11311.5 lm	100.0 %
BUG B4 U0 G0 Type I Very Short Asymmetrical			